



To arrange a viewing
please call 01908 675747

This TOP FLOOR APARTMENT offers VAULTED CEILINGS throughout making for a VERY IMPRESSIVE PROPERTY. The apartment also benefits from CLOSE PROXIMITY to WILLOW LAKE and the A5 with easy access to CMK. WHITE GOODS INCLUDED.....

In further detail, this beautiful top floor apartment is situated in the highly sought after location of Newton Leys which is only a short drive from Central Milton Keynes. Briefly comprising of entrance hall, spacious open plan living/kitchen area with wood flooring, double bedroom & bathroom with shower. Within close proximity of the local Asda & The Turing Key Public House, this property is ideally placed.

Offered unfurnished & available end of February. EPC Rating: TBC

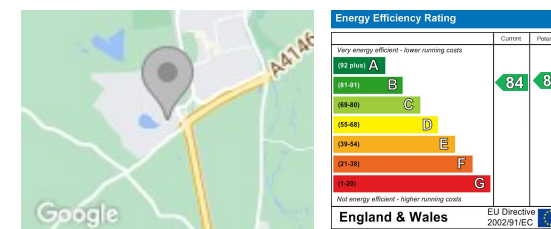
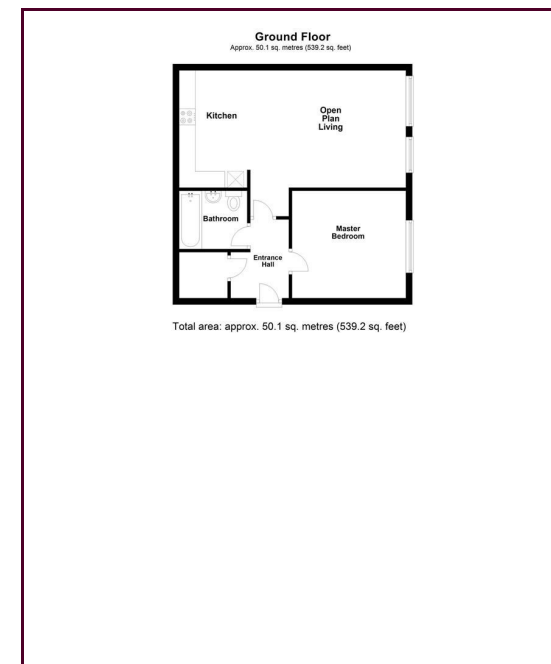
6 month minimum tenancy
Council Tax Band A
Deposit is equivalent to 5 weeks rent

- Top Floor Apartment
- White Goods Included
- Close To Lake

- Modern Bathroom
- Well Presented Throughout
- Vaulted Ceilings Throughout

LOCATION: NEWTON LEYS

Newton Leys is a district that covers the southern tip of Bletchley; on the boundary of the Borough of Milton Keynes and Aylesbury Vale. The area is currently under development and sits next to a man-made lake, approximately 7 miles from Central Milton Keynes and close to local Buckinghamshire villages. Water Hall Primary School is within a mile of the development, with Newton Leys Primary School opening in September 2016 to provide places for children aged 4 to 11 years. For commuters, the A5 and the M1 are just a few minutes' drive from home, while regular direct services operate from Bletchley railway station (less than three miles away) to London Euston in as little as 40 minutes. Those travelling further afield may appreciate that Luton Airport is approximately 26 miles from the development.



Draft Details

These details have been submitted to our clients but at the moment have not been approved by them. We therefore, cannot guarantee their accuracy and they are distributed on this basis. Please ensure you have a copy of our approved details before committing yourself to any expense.

Whilst we endeavour to make our sales details accurate and reliable, if there is any point which is of particular importance to you, please contact the office and we shall be pleased to check any information for you. Do so, especially if travelling any distance to view the property.

The mention of any appliances and/or services within these details does not imply they are in full and efficient working order.

Any plans included within these details are a GUIDE TO THE LAYOUT OF THE PROPERTY ONLY and are NOT DRAWN TO SCALE. Dimensions are approximate.

Mortgage Information

We can offer independent mortgage advice. Please call us to discuss your requirements. Your home may be repossessed if you do not keep up repayment on your mortgage or any loans secured on it.

Property Valuations

We have some of the most experienced property valuers in Milton Keynes and would welcome the opportunity to carry out a VALUATION and MARKET APPRAISAL of your home.

Viewing Arrangements

Please call us to make an appointment to view this property.

Monday to Friday 9.00 am - 6.00 pm
Saturday 9.00 am - 4.00 pm
Sunday CLOSED

